

OKOS

MacroVue 900

Scanning Acoustic Microscope



OKOS Advantages

Dual Transducers

Higher Productivity

Scans from Top and Bottom

900 mm x 500 mm Scan Area

Automated lifter to lower parts into tank slowly

Features & Benefits

MacroVue 900 Dual Channel Scanner

Scan Envelope:	900 mm x 400 mm
Transducers:	Two
Fixture Type:	Flexible (JEDEC, Custom)
Scan Axis:	1.5 m/second
Resolution:	0.5 microns
Software:	Lab & Production

Operational Modes

Simultaneous Pulse Echo from Top and Bottom with transducers offset mechanically to avoid signal interference

Hands Free Pulse Echo from Top, Pulse Echo from Bottom and Through Transmission without switching cables or rescanning.

ODIS software automatically collects data from up to three transducers simultaneously.

Application Flexibility

9 JEDEC trays

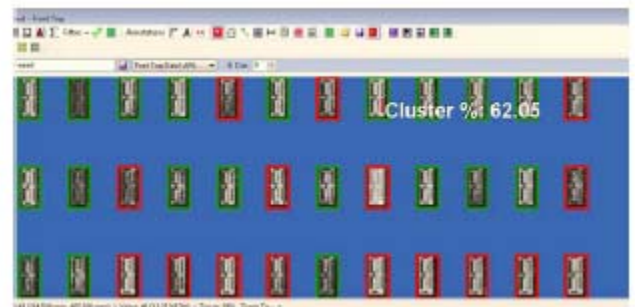
32 ceramic panels

500+ small packages in custom fixture

Solar panels

TV panels

20 wafers



Production Good/Bad Interface

Mechanical

Servo on scan axis
 1.5 m/s max scan velocity
 +/- 0.5 micron accuracy & repeatability
 0.5 micron data resolution
 900 mm x 500 mm scan area

Fixtures

Adjustable Fixture
 Dual Channel

Dimensions

1.6 m x 1.3 m x 1.3 m

Sub Systems

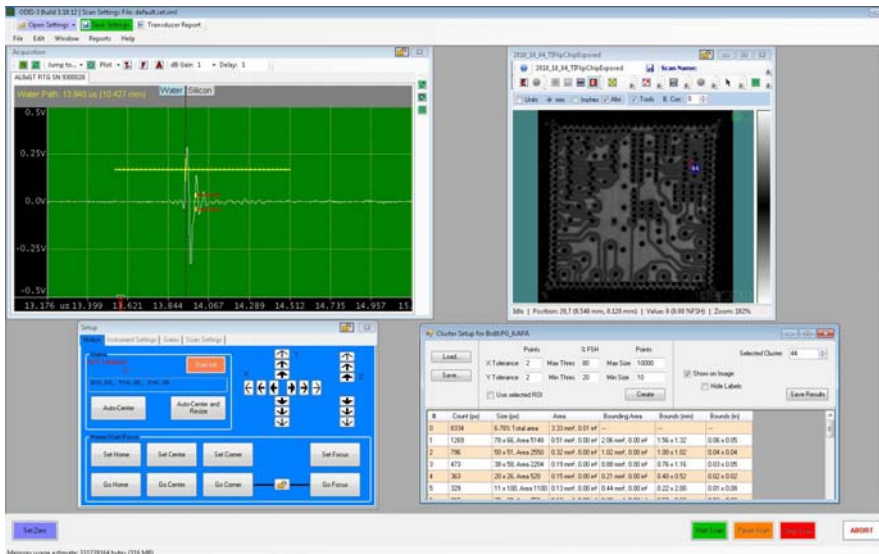
High frequency digital pulser-receiver

Display

Optional multi-touch

ODIS Software

ODIS is flexible and powerful Ultrasonic Imaging software. It is designed and built on ideas provided by industry experts and customers. Developed in state-of-the-art C# from Microsoft, ODIS software can be modified and enhanced easily. Local language support is available for production environments. All data is stored in non-proprietary format and can be easily exported to other systems.



Windows 7
 SALI Scan (100 Gates)
 Multiple B-Scan Regions
 Cluster Analysis
 Easy Data Export
 Advanced Analysis
 Lab /R&D
 Production Mode
 Up to Three Transducers

OKOS Solutions, LLC
 4429 Brookfield Corp. Dr., #300
 Chantilly, VA 20151, USA
 Tel: 703-880-3039 Fax: 240-235-7277
 www.okos.com info@okos.com